

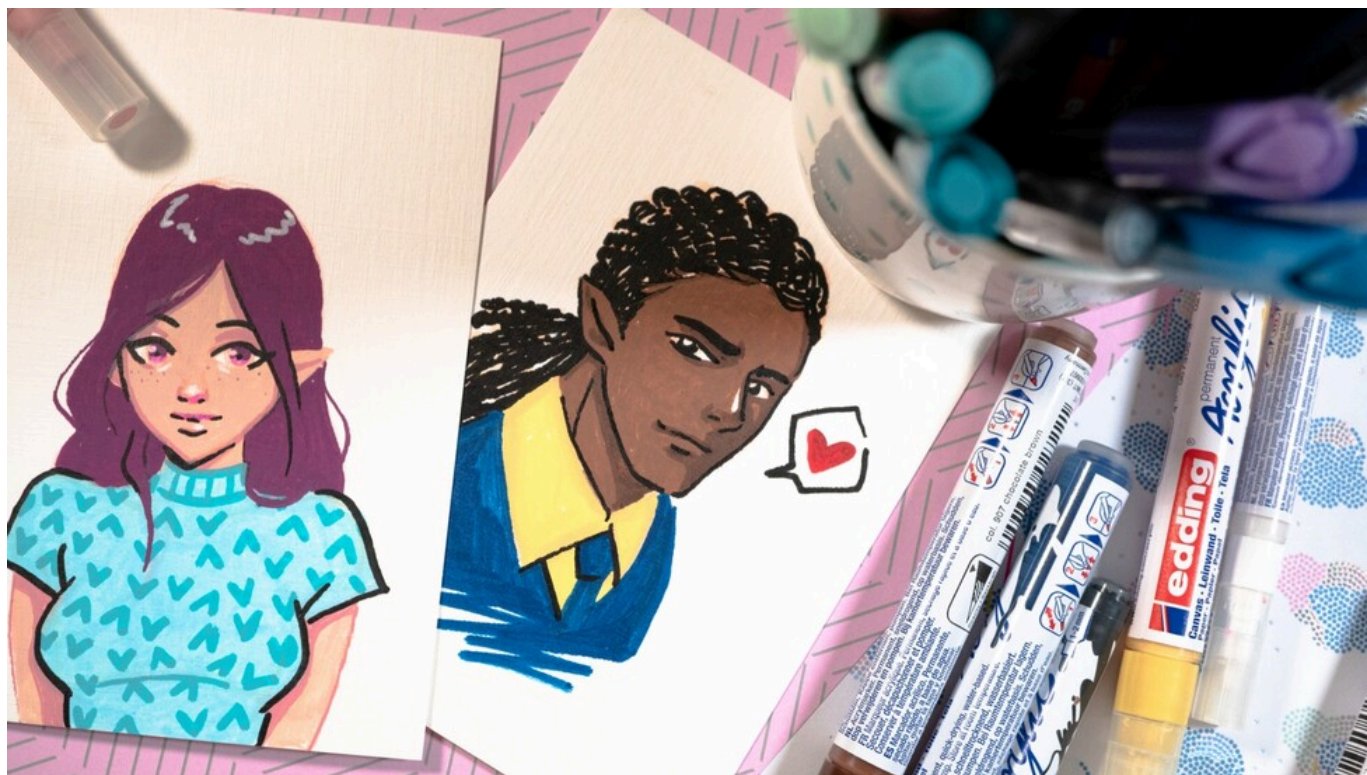
Create your own mangas

Instructions No. 2863

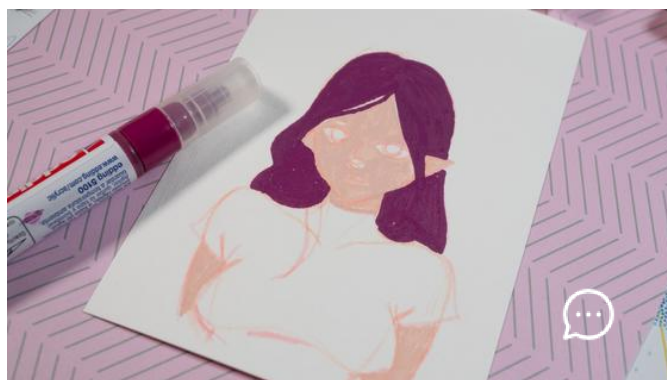
Difficulty: Beginner 

Working time: 3 Hours

Do you want to paint manga or anime characters? It's not that difficult, we'll show you how to do it step by step. Particularly important are the large eyes that characterise all mangas and reflect the emotions of the respective character. With edding acrylic markers and fibre-tip pens, you'll have just the right "tools" at hand to create great pictures. At the same time, you'll also find the right paper here - the edding acrylic and oil painting pad. It is perfectly matched to the specific properties of the acrylic markers and has very good absorbency.



For this motif, you will need the edding acrylic markers in different widths and colours of your choice. Take a sheet from the edding acrylic and oil painting pad and an edding 1200 fibre-tip marker in cherry blossom or an edding 1340 brush pen in light orange (shown in the picture) and sketch your motif.

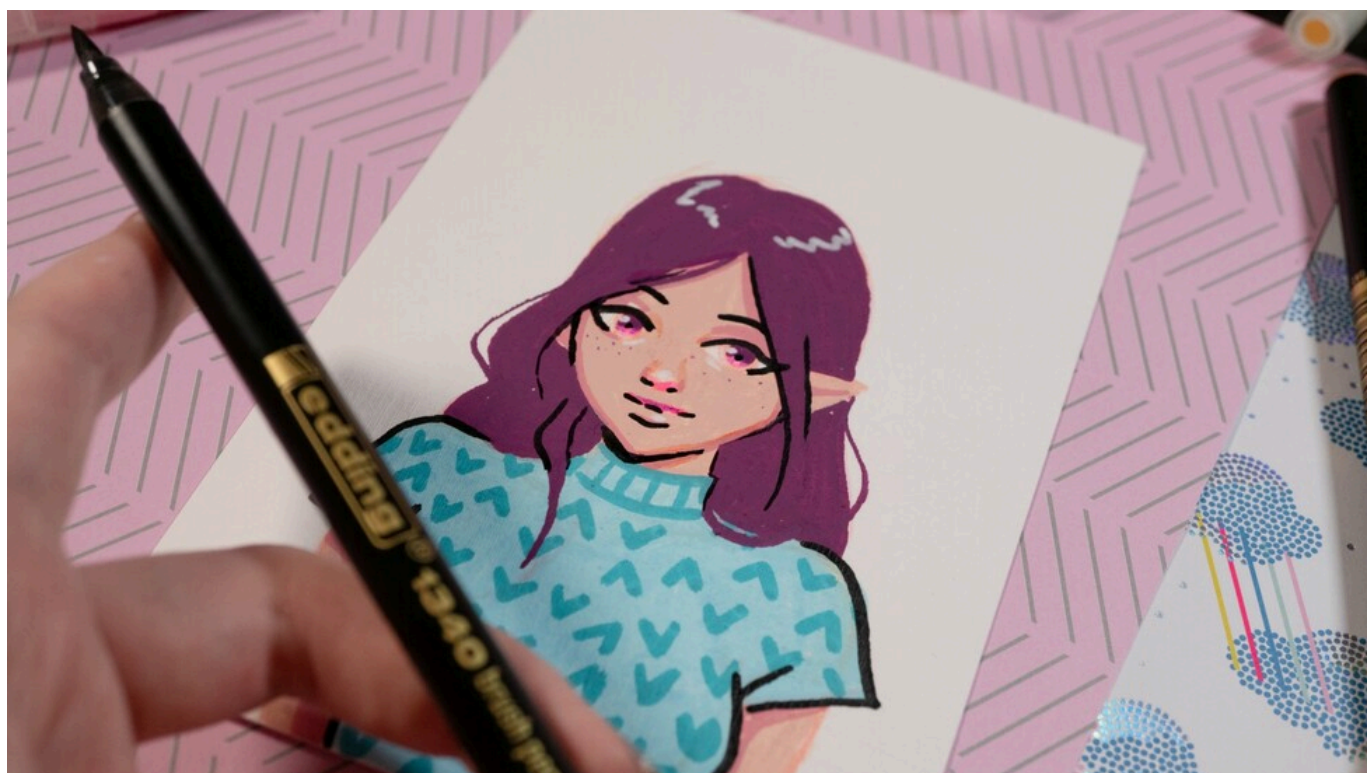


Before starting to paint, first activate the acrylic markers as follows: Shake the marker with the cap on until the mixing ball can be heard inside the pen, then carefully pump it up and down until the ink appears in the tip. With the wide acrylic marker edding 5000 with wedge tip it is very important to hold the marker at a slight angle so that the wedge tip is not damaged. Write on the markers on a piece of paper. You can now colour in the large areas with the activated markers. The wide acrylic marker and the medium acrylic marker are particularly suitable. The hair was created here in the colour "berry".



For the skin colour, for example, the colour warm beige is very suitable.

Of course, great details should not be missing. The fine acrylic marker edding 5300 is particularly suitable for fine elements on the face, such as the outlines around the eyes or colour accents. You can also use the narrow side of the wedge tip of the edding 5000 acrylic marker for this.



Add the finishing touch to your picture by painting the outline. For this, it's best to use the fine acrylic marker edding 5300 or the brush pen edding 1340 in black. Your work of art is finished!



New instructions

Straight to your inbox every week

Register now >

Article information:

Article number	Article name	Qty
14887	edding 5000 Acrylic "Acrylic marker - Wide" Warm beige	1
14921	edding 5100 Acrylic "Acrylic marker - Medium" Telemagenta	1
11469	edding 1340 "Brush Lettering", set of 20	1
16822	edding Acrylic/oil painting block DIN A4	1