


Fleece Fabric Sea Animals

Instructions No. 2727

Difficulty: Advanced 

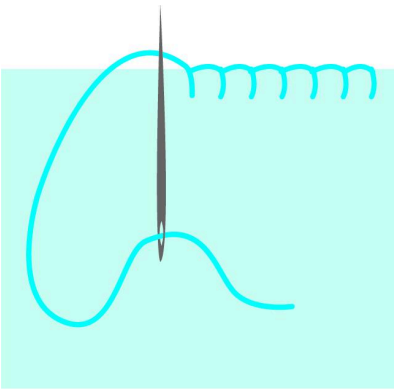
Working time: 6 Hours

Our **sea animals** are so fluffy because they are sewn from **fleece fabric**. They are easily sewn together by hand and can therefore be made by sewing beginners and with a little help from children. A cute idea for the children's room or as a gift. Let the underwater world move into your home.



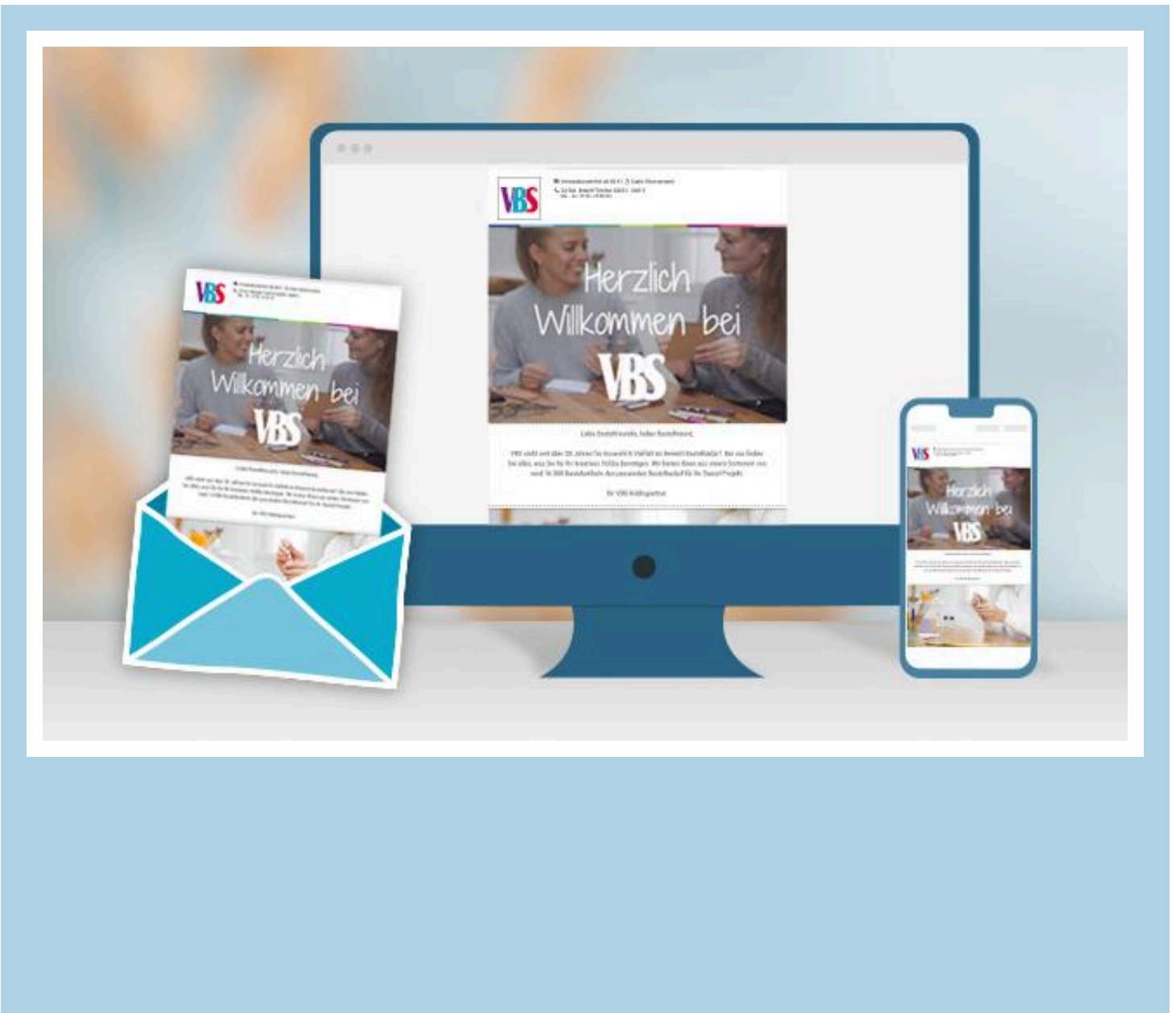
How to sew the cute sea creatures:

Print out the **pattern** for the cute sea creatures. Transfer them 2 x onto the **fleece fabric** - 1x normal, 1x mirror-inverted. Cut out the motifs. Place the two sea animal pieces on top of each other and sew them together by hand with the **buttonhole stitch**.



Not only can you sew buttonholes with this stitch, but you can also use it to **decoratively border edges**. Before closing the seam completely, fill the animals with cotton wool. Then close the seam. The stitch is done from right to left. The needle is inserted next to the edge. The tip of the needle lies over the thread laid on the left. Continue in this way until the seam is finished.

Finally, glue on the **wiggly eyes**. A hot glue gun is best suited for this.



New instructions

Straight to your inbox every week

register now >

Article information:

Article number	Article name	Qty
378383-97	Fleece fabric "Antipeeling", uniNature	0.2
378383-92	Fleece fabric "Antipeeling", uniRed	0.2
378383-29	Fleece fabric "Antipeeling", uniOld Pink	0.2
378383-28	Fleece fabric "Antipeeling", uniGreen	0.2
378383-20	Fleece fabric "Antipeeling", uniPetrol	0.2
378383-00	Fleece fabric "Antipeeling", uniMedium Blue	0.2
15933	Fleece fabric "Antipeeling", uniLilac	0.2
398749-01	Warp yarnWhite	1
601093	VBS Wobbly eyes to glue on "Mix", 100 pieces	1
232487	VBS Fill wadding, white, 300 g	1