

Kreativ-Set "Swinging Bunnies"

Instructions No. 1548

🔪🔪🔪🔪 Difficulty: Beginner

🕒 Working time: 30 Minutes

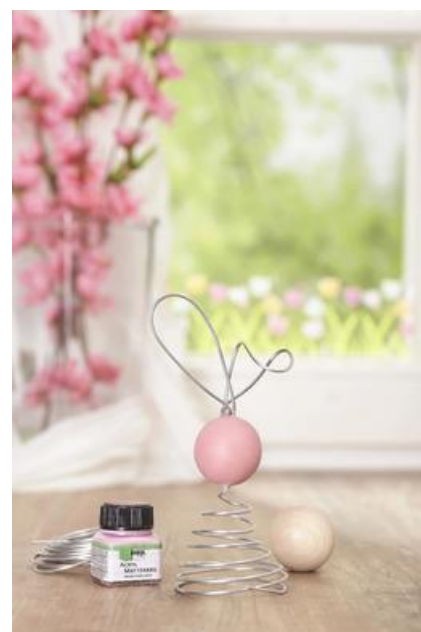
The enchanting wire rabbits are an absolutely contemporary Easter decoration. It is produced quickly and looks modern and high-quality afterwards.



So fast you can make the Swinging Bunnies

First of all, start with the **Wooden balls** in the various enclosed **Hobby paints** to paint. If necessary, the different colours can be mixed with the colour shade "Ivory" to achieve lighter shades.

Allow the balls to dry thoroughly and, if necessary, apply a second coat to ensure colour brilliance.



Creative with wire



Now the wire is formed. The creative set "Swinging Bunnies" contains among other things 3 rolls of aluminium wire with 2 mm thickness with 3 m each (total 9 m aluminium wire). For a rabbit you always need 40 cm wire for the ears and approx. 95 to 100 cm for the body.

Therefore, cut pieces of wire about 40 cm long for each of the five rabbits and straighten them (this will later result in the ears). You should now have about 100 cm of wire left on this first wire spiral. This amount is sufficient for the first hare body

Turn the wire into smaller and smaller spirals. Since you use the pre-bent **spiral shape** of the aluminium wire, the tapered wire spiral for the rabbit body will certainly be nice and even. "Modelling" you can also see the other rabbit bodies in this way.

Where the **head** is to be attached, a small, approx. 1 cm long piece of the wire is now bent vertically upwards. On top of this the Wooden ball is fixed with the help of a hot glue gun.

After the body and head are finished, bend the ears out of the 40 cm pieces: Two wire loops are made from one piece, which are then also glued to the Wooden balls with the hot glue.

Article information:

Article number	Article name	Qty
755771-09	KREUL Acrylic matt paint, 20 mlDark brown	1
755771-13	KREUL Acrylic matt paint, 20 mlRaspberry	1
755771-50	KREUL Acrylic matt paint, 20 mlSky Blue	1
755771-40	KREUL Acrylic matt paint, 20 mlLemon	1