



Recommended Yarn

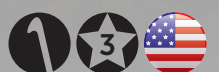
[schachenmayr.com](https://www.schachenmayr.com)

Follow us     

MEZ GmbH, 2020. All rights reserved.

S10652

Célia





S10652

Célia

Design: Jennifer Stiller

V.1/JS/DS

Crochet



Intermediate



SIZE (blocked)

Width

approx. 18 cm

Length

approx. 180 cm

MATERIALS

Schachenmayr Tahiti, 50 g ball

approx. 50 g = 280 m

Col. 07646 (malaga) 3 balls

Yarn amounts are approximate. Make sure to purchase enough of the same dye lot in order to complete your project. The colour names refer to the German names on the sleeves. The amount of yarn needed can vary from person to person.

1 crochet hook, 3.0 mm

1 tapestry needle for weaving in ends

ABBREVIATIONS:

(t)ch = (turn) chain

st = stitch

dc = double crochet

R = row

fpdc = front post double crochet

bpdc = back post double crochet

hdc = half double crochet

GAUGE (blocked)

Basic pattern:

26 sts and 15 rows = 10 x 10 cm

Adjust your needle size if necessary to obtain the correct gauge.

BASIC TECHNIQUES

Basic pattern

Start loosely with an even number of st + 3 tch (= 1 dc).

Work according to the chart. Work Rows 1 to 6 once each, then rep rows 7–12 continuously.

Finish the scarf with rows 7 and 8.

Front post double crochet

Wrap the yarn just once around the hook, insert hook from the front around the neck of the dc from the previous R

and draw through. There are now 3 loops on the hook.

Draw through 2 of the 3 loops.

Pick up the yarn again and draw through both loops.

Back post double crochet

Wrap the yarn just once around the hook, insert hook from the back around the neck of the dc from the previous R and draw through. There are now 3 loops on the hook.

Draw through 2 of the 3 loops.

Pick up the yarn again and draw through both loops.

K stitch

Sk 1 st, 1 dc, 1 dc (1 st back across the previously worked dc)

INSTRUCTIONS

Start loosely using crochet hook C or D (3 mm) and ch 450 + 3 tch (= 1 dc).

Row 1: work 1 dc in every st with the 1st dc in the 4th ch from hook. 3 tch, turn over.

Row 2: work 1 dc in every st, 2 tch, turn over.

Row 3: work 1 fpdc in every st, finish the row with 1 hdc, 2 tch, turn over.

Row 4: work 1 bpdc in every st, finish the row with 1 hdc, 3 tch, turn over.

Row 5: work K stitch, 3 tch, turn over.

Row 6: * Ch 1, sk 1 st, 1 dc, rep continuously from *. 3 tch, turn over.

Row 7: work 2 dc around every ch of the previous rnd, 3 tch, turn over.

Row 8: work 1 dc in every st, 2 tch, turn over.

Row 9: work 1 fpdc in every st, finish the row with 1 hdc, 2 tch, turn over.

Row 10: work 1 bpdc in every st, finish the row with 1 hdc, 3 tch, turn over.

Row 11: work K stitch, 3 tch, turn over.

Row 12: * Ch 1, sk 1 st, 1 dc, rep continuously from *. 3 tch, turn over.

Rows 13–24: work as rows 7–12.

Row 25: work 2 dc around every ch of the previous rnd, 3 tch, turn over.

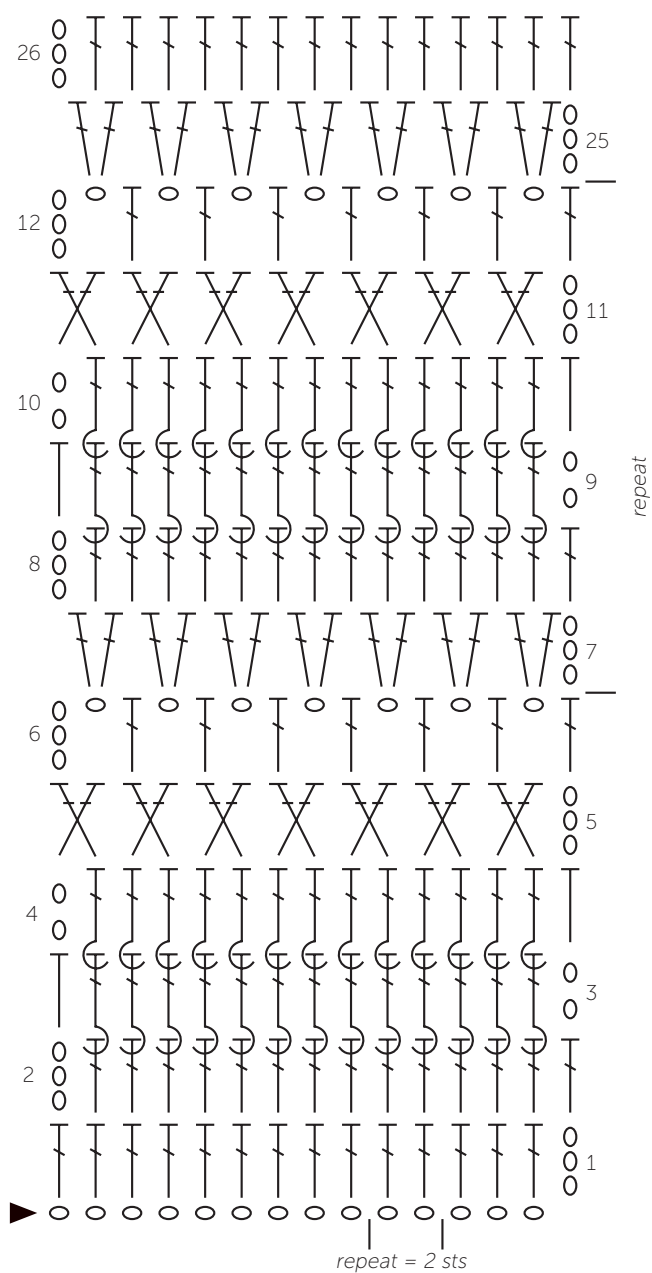
Row 26: work 1 dc in every st. Draw the yarn through.

FINISHING

Weave in all ends with a tapestry needle.

Dampen and block the scarf to the right size, and allow to dry.

Chart



Key chart

